

**INSTALLATION INSTRUCTIONS**  
**FOR**  
**NASCAR**  
**XFINITY FFCB ROOF LATCH SYSTEM**  
**PART NUMBER: 15001-51695**



MANUFACTURED IN THE U.S.A BY  
**FIVE STAR FABRICATING, INC.**  
36728 89TH STREET | TWIN LAKES, WI 53181

**INSTALLATION INSTRUCTIONS ISSUED 08/31/2018**  
**REVISED 02/04/2020**  
INSTRUCTION PART NUMBER: XG 15001-51695  
**\*THIS MANUAL SUPERCEDES ALL PREVIOUS PUBLICATIONS**

LATCH SYSTEM MUST BE INSTALLED AS SPECIFIED IN THESE INSTRUCTIONS. MODIFICATIONS TO ANY PARTS IN THE ASSEMBLY ARE PROHIBITED UNLESS SPECIFIED IN THE INSTRUCTIONS OR BY NASCAR. TRIMMING OR OTHER MODIFICATIONS TO THE LATCH IS PROHIBITED.

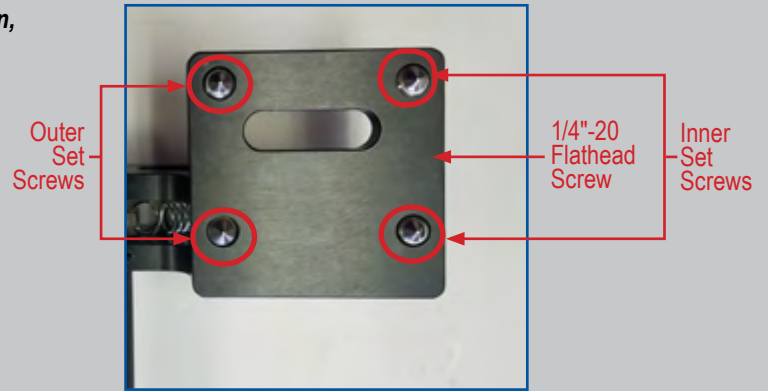
**REVIEW INSTRUCTIONS BEFORE BEGINNING INSTALLATION**



# FFCB XFINITY ROOF LATCH SYSTEM INSTALLATION INSTRUCTIONS

## IMPORTANT NOTE:

Before beginning installation, inspect the latch assembly. Make sure the inner set screws are slightly raised and the outer set screws are flush with bottom of the plate. This will allow the base of the latch to rest comfortably on the contour of the escape hatch.

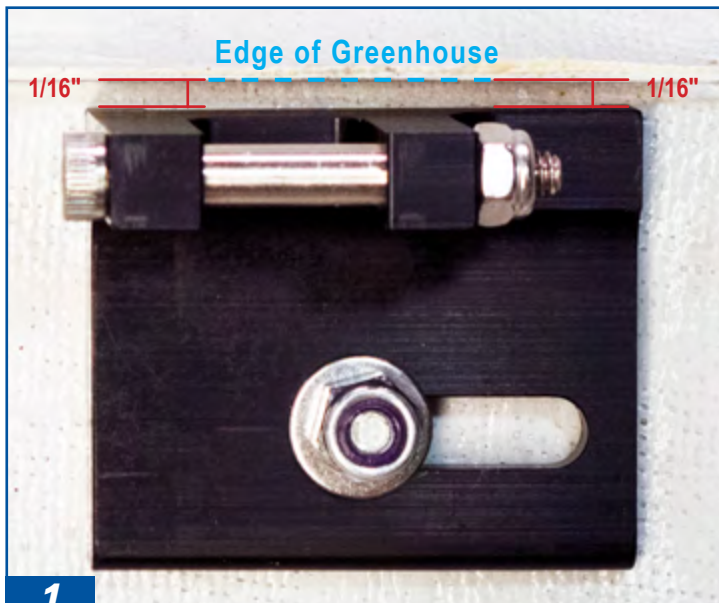


### TOOLS REQUIRED

- 7/16 Wrench
- 5/32 Allen Wrench
- 1/8 Allen Wrench

## INSTALLATION INSTRUCTIONS

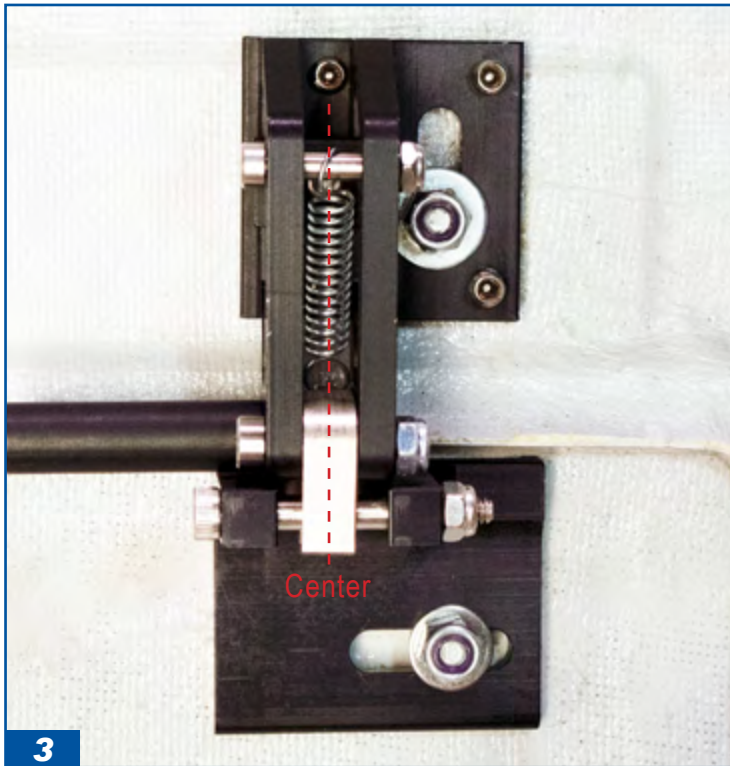
**STEP 1:** Place both striker plates over the bolts of the escape hatch. The striker plates should be located approximately 1/16" from the edge of the greenhouse and parallel to each other. Lightly tighten the nylon locknuts just enough so that it stays in place. Open and close the hatch to verify the striker plates do not rub against the opening.



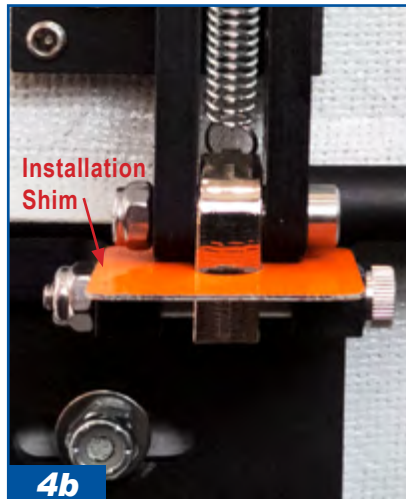
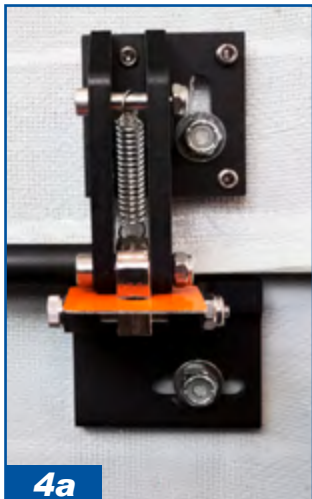
**STEP 2:** Begin with one side. With the latch unlocked, place the latch assembly into position over roof bolt. Press down on the latch assembly so that it locks and goes into place. Tighten the nylon locknuts just enough so that it stays in place.



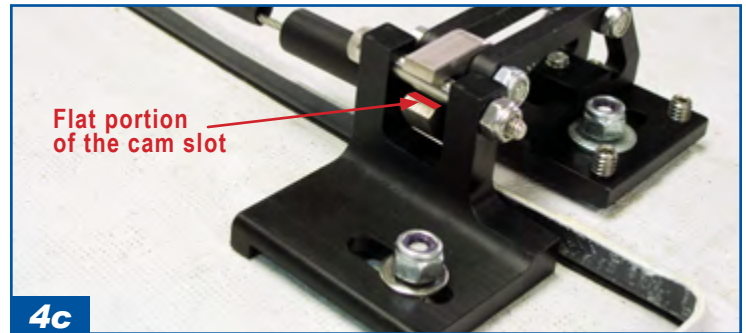
**STEP 3:** The latch assembly needs to be squared and centered with the striker plate. Move the striker plate side to side to center. Make sure striker plate remains parallel with opposite striker plate.



**STEP 4:** Move the latch assembly forward or backward to obtain proper engagement. To move the latch, you need to loosen the 1/4"-20 locknut on the roof bolt. The latch assembly needs to be far enough forward to ensure proper engagement. The distance between striker plate and latch body needs to be 0.030". Slide the Installation Shim between the striker plate and latch body to get the appropriate spacing/alignment (Images 4a and 4b). Once everything is in place, tighten the 1/4"-20 locknut.



**STEP 4 CONT.** This will assure proper latch engagement. You must have the striker pin engaged far enough to see the flat portion of the cam slot (Image 4c).



**STEP 5:** With fasteners snug, open and close latch. Verify latch completely engages and the striker plate does not rub against greenhouse.

**STEP 6:** If the latch is in closed position and the hatch is not tight, adjust the front two set screws to kick back the latch assembly and it will start to tighten up.

If it is too tight, meaning that the latching pin does not come through, you will need to reverse the set screws to bring the latch closer to the roof. Adjust until the lock pins are fully engaged.

### Important Note:

To increase or decrease the tightness of the closure position, adjust the set screws in the latch assembly. Anytime you adjust the set screws to tighten the closed position, you must slightly loosen the 1/4"-20 nut first. This allows the latch to move in the desired direction. Make the adjustment in very small increments, moving back and forth between the set screws and the 1/4"-20". If you do not loosen the nut, you would drive the set screws into the greenhouse.

**STEP 7:** Repeat Steps 2 through 6 for the other side.

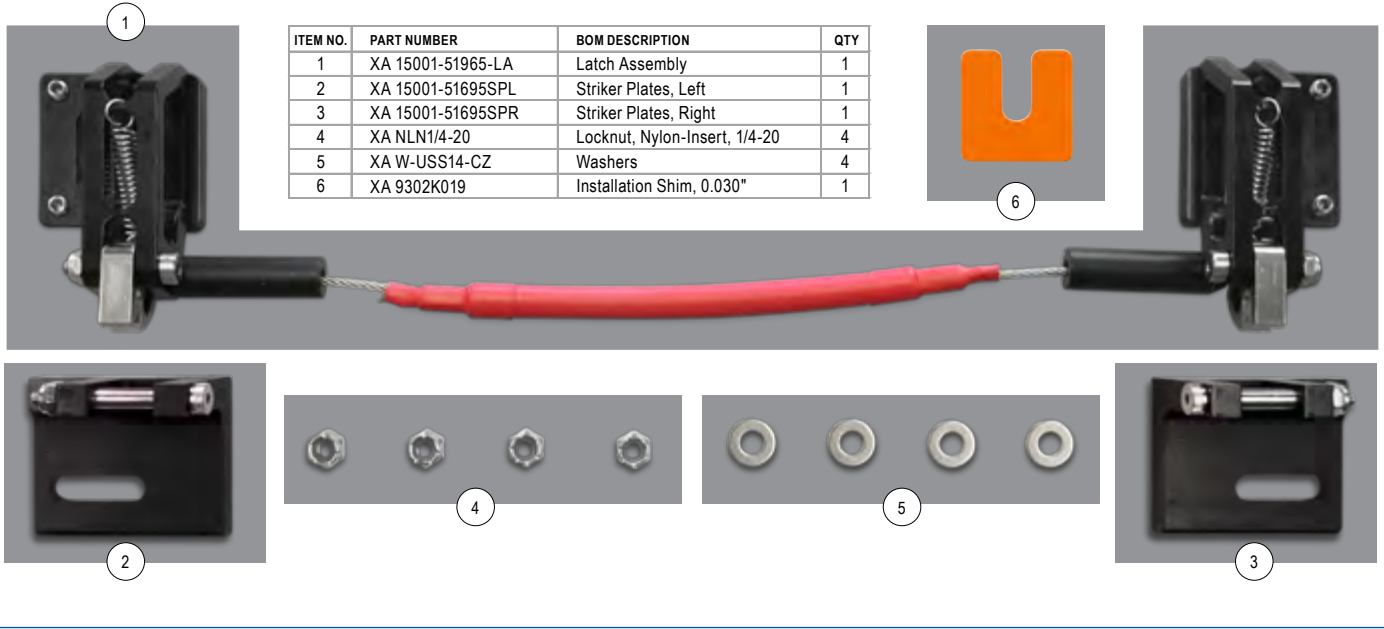
**STEP 8:** After both sides are attached, open and close the hatch, making sure the lock pins are fully engaged.

**STEP 9:** Fastening nylock nuts requires 105 in-lbs of force.

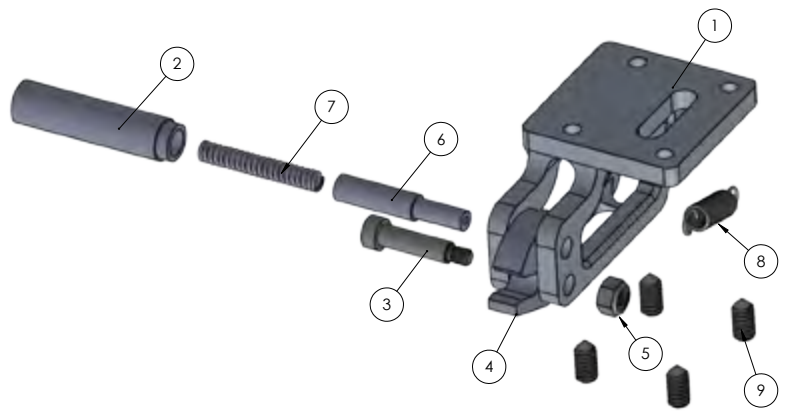
**STEP 10:** Verify the set screw have a minimum of 4 in-lbs each.

**FINAL INSPECTION:** Open and close the escape hatch multiple times. The hatch must be forcefully closed because you need to compress the hatch gasket. Verify the locking pin is completely engaging. If not, the hatch has been adjusted in too tight of a position. See Step 6 for adjusting the set screws.

# COMPLETE KIT



ITEM NO.	PART NUMBER	BOM DESCRIPTION	QTY
1	XA 15001-51965-LA	Latch Assembly	1
2	XA 15001-51695SPL	Striker Plates, Left	1
3	XA 15001-51695SPR	Striker Plates, Right	1
4	XA NLN1/4-20	Locknut, Nylon-Insert, 1/4-20	4
5	XA W-USS14-CZ	Washers	4
6	XA 9302K019	Installation Shim, 0.030"	1



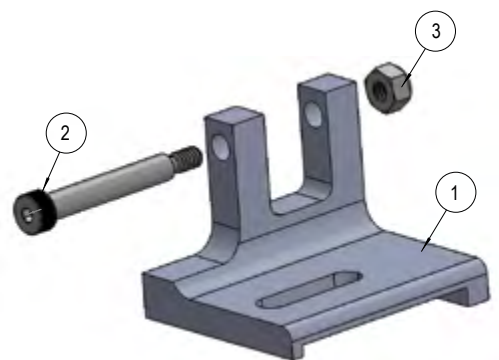
*Set screws are coated with Vibra-Tite VC-3 Threadmate®.*

ITEM NO.	PART NUMBER	BOM DESCRIPTION	QTY
1	XA 15001_11A	Billet Body, Left	1
	XA 15001_12A	Billet Body, Right	1
2	XA 15001_04A	Lock Pin Barrel	2
3	XA 94035A184	Shoulder Bolt, 1/4" X 7/8"	2
4	XA 15001_05AL	Locking Cam, Left	1
	XA 15001_05AR	Locking Cam, Right	1
5	XA 91831A411	Locknut, 10-32	2
6	XA 15001_08A	Locking Pin	2
7	XA 9434K161	Spring, 1.5" Long X 0.24" OD	2
8	XA 9654K125	Spring, 1.25" Long X 0.313" OD	2
9	XA 92695A306	Set Screw, 1/4"-20	8
10	XA 3/32-7x7	18-8 Stainless Steel Wire Rope	1

\* Only left side shown. Quantities listed for complete kit. 18-8 Stainless Steel Wire Rope not shown

ITEM NO.	PART NUMBER	BOM DESCRIPTION	QTY
1	XA 15001_07AL	Striker Plate Base, Left	1
	XA 15001_07AR	Striker Plate Base, Right	1
2	XA 90298A546	Shoulder Bolt, 1/4" X 1.5"	2
3	XA 91831A011	Locknut, 10-24	2
	XA 7496K44-RED	Heat Shrink Tubing, Red	1
4	XA 6516T53	PVC Tubing, 3/16 ID, 3/8 OD	1
5	XA 3897T23	Compression Sleeve	2

\* Left Striker Plate shown. Tubing and Compression Sleeves not shown.



<b>Total Weight of Kit</b> .....	<b>463g</b>
Striker Plate Assembly.....	81g
Latch Assembly .....	332g
Lock Nuts & Washers .....	20g