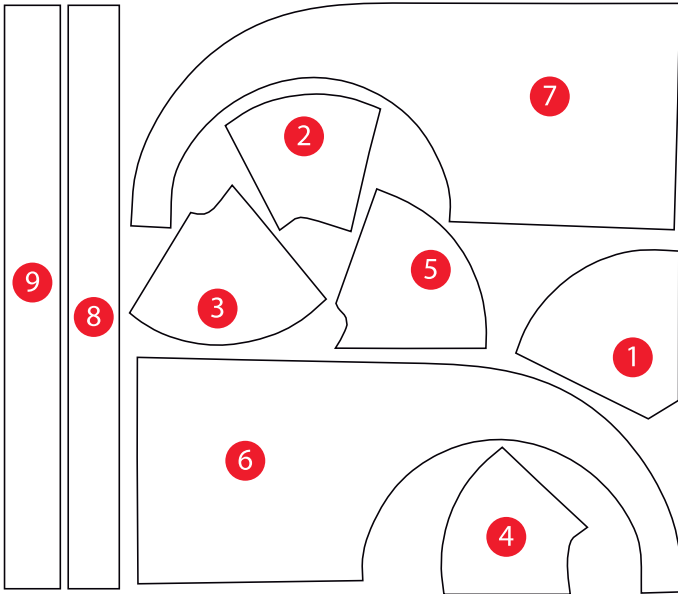




HEAT SHIELD INSTRUCTIONS

EASY STEP BY STEP INSTRUCTIONS ON INSTALLING HEAT SHIELD MATERIAL TO YOUR COLD AIR BOX!



Before you begin:

- Finalize the fit of the airbox onto the car.
- Identify corresponding pieces with the diagram shown at left. Marking each piece with the number shown can be helpful.
- Do not discard excess material (cut offs). These can be used later to patch any uncovered areas.
- When applying the heat shield, do not worry about small wrinkles. They can either be worked out or material can be peeled back gently and reapplied.



1a



1b

Step 1:

Cut all of the pieces out with standard scissors.

When cutting pieces out, it is not critical to cut exactly on the line. Slightly oversize is better than undersize.



2a



2b

Step 2:

- Lay airbox bottom upside down on your work table.
- Place piece #1 below center of choke tower flange.
- Peel off backing and apply, working from bottom of bowl to top.

Step 3: Fit remaining pieces (#2-5) around bowl clockwise, in numerical order, one piece at a time. Overlap each seam by approximately 1/4" on top of the previous piece.



3a



3b



3c



3d



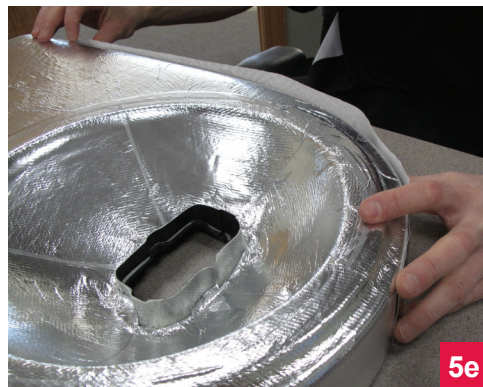
HEAT SHIELD INSTRUCTIONS

EASY STEP BY STEP INSTRUCTIONS ON INSTALLING HEAT SHIELD MATERIAL TO YOUR COLD AIR BOX!

Step 4: Lay piece #6 along the approximate centerline of airbox. Locate ring area along center of air filter recess. Repeat this process for piece #7.



Step 5: Finish the edge with pieces #8-9 along the perimeter to complete installation.



Note: It may take 2-3 days for the adhesive to fully bond to the cold air box. During this time, there may be some minor separation from the box: be sure to check, and press back down if needed.

